



Do you have a learning disability and identify as LGBTQ or know someone who does?

Come and join our newly formed monthly social group for a chance to talk & meet new people.

Wednesday  **May**



At

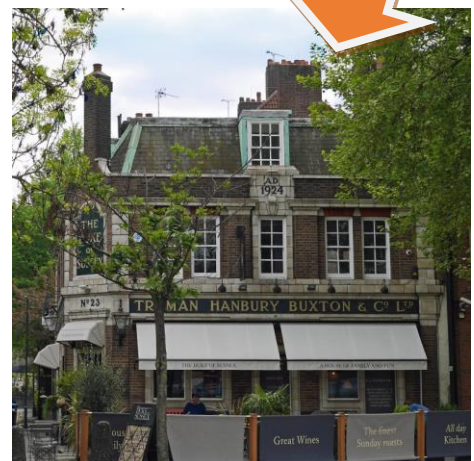
5.00

The meeting will be held at
The **Duke of Sussex** pub on 23 Baylis Rd,
Lambeth, London SE1 7AY
(near Waterloo station)

Look out for ...



Jon, Pippa & Thomas



If you want to attend, please email us at involvement-team@choicesupport.org.uk or just come along!